

# ROUNDTABLE MEETING ON SUSTAINABLE PALM OIL

UPDATE ON THE  
STAGED IMPLEMENTATION OF  
RSPO REMEDIATION AND  
COMPENSATION PROCEDURES



SUSTAINABILITY  
**WHAT'S NEXT?**

# Objectives of the CTF

- To develop an acceptable compensation mechanism for land clearance without prior HCV assessment or where subsequent HCV assessments have determined that HCV were lost
- To set up a pilot process to implement the guidance and test the compensation process with RSPO members.

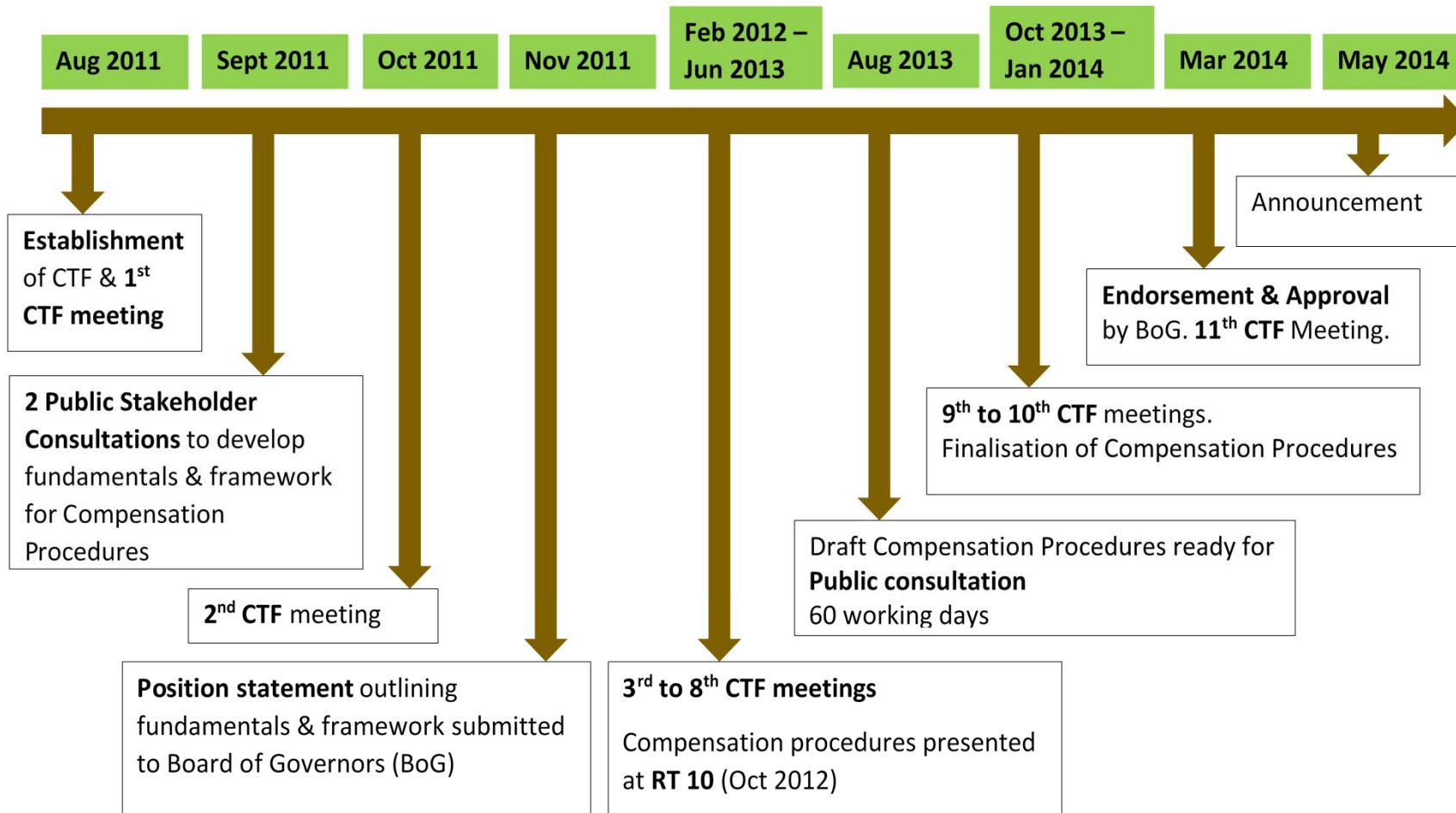


# Current Members of CTF

	Organization	RSPO membership category
1	Sipef	Growers
2	Musim Mas	
3	GAR	
4	REA Kaltim	
5	Olam	
6	Sime Darby	
7	Felda	
8	ZSL	ENGO
9	WWF International	
10	WRI	
11	BORA	
12	WWFM	
13	HUTAN	
14	FFI	SNGO
15	FPP/Sawit Watch	
16	SEPA	Processor and Trader
17	Wilmar	
18	IFC	Financial institution
19	HCV RN	Independent
20	Remark Asia	Independent
21	Independent	Senior Advisor
22	SEARRP	Invited Expert



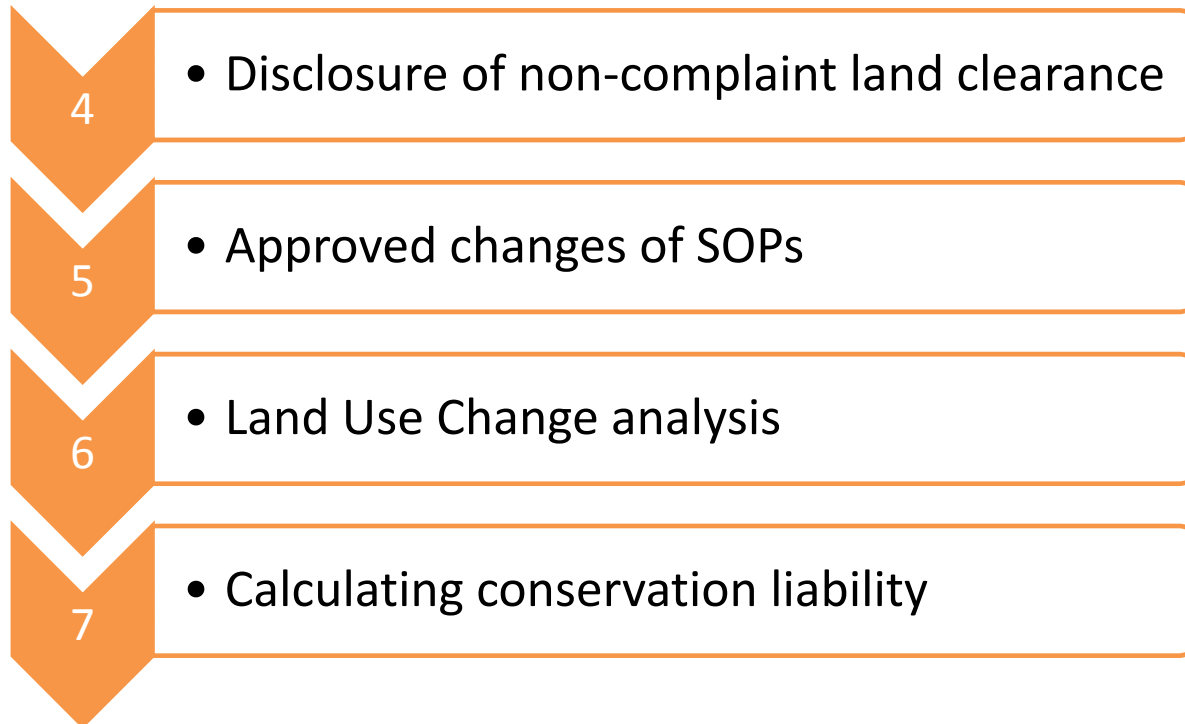
# Chronology of Events



The staged implementation is designed to gather additional information and experiences in order further refine the finalized procedures



# Required sections during the staged implementation



# Voluntary sections during the staged implementation

8

- Compensation panel

9

- Remediation & compensation for the social impacts of the loss of HCVs 4,5 & 6

10

- Options for implementation of compensation

11

- Designing compensatory biodiversity projects

12

- Approval of remediation & compensation plans

13

- Monitoring of implementation

# 2014 Milestones

- *March 6th:* Board of Governors approves staged implementation of Remediation and Compensation Procedures
- *May 9th:* Effective start date of staged implementation. Announcement sent to members and supporting documents posted on RSPO website.
- *June - July:* “Compensation Roadshow” outreach events in Jakarta, Kuala Lumpur, and Bogota
- *31 July:* Deadline for all member companies to disclose any non-compliant land clearance
- *30 September:* deadline for all companies in control of areas with non-compliant land clearance to submit a Land Use Change (LUC) analysis (with supporting templates, maps, and data)





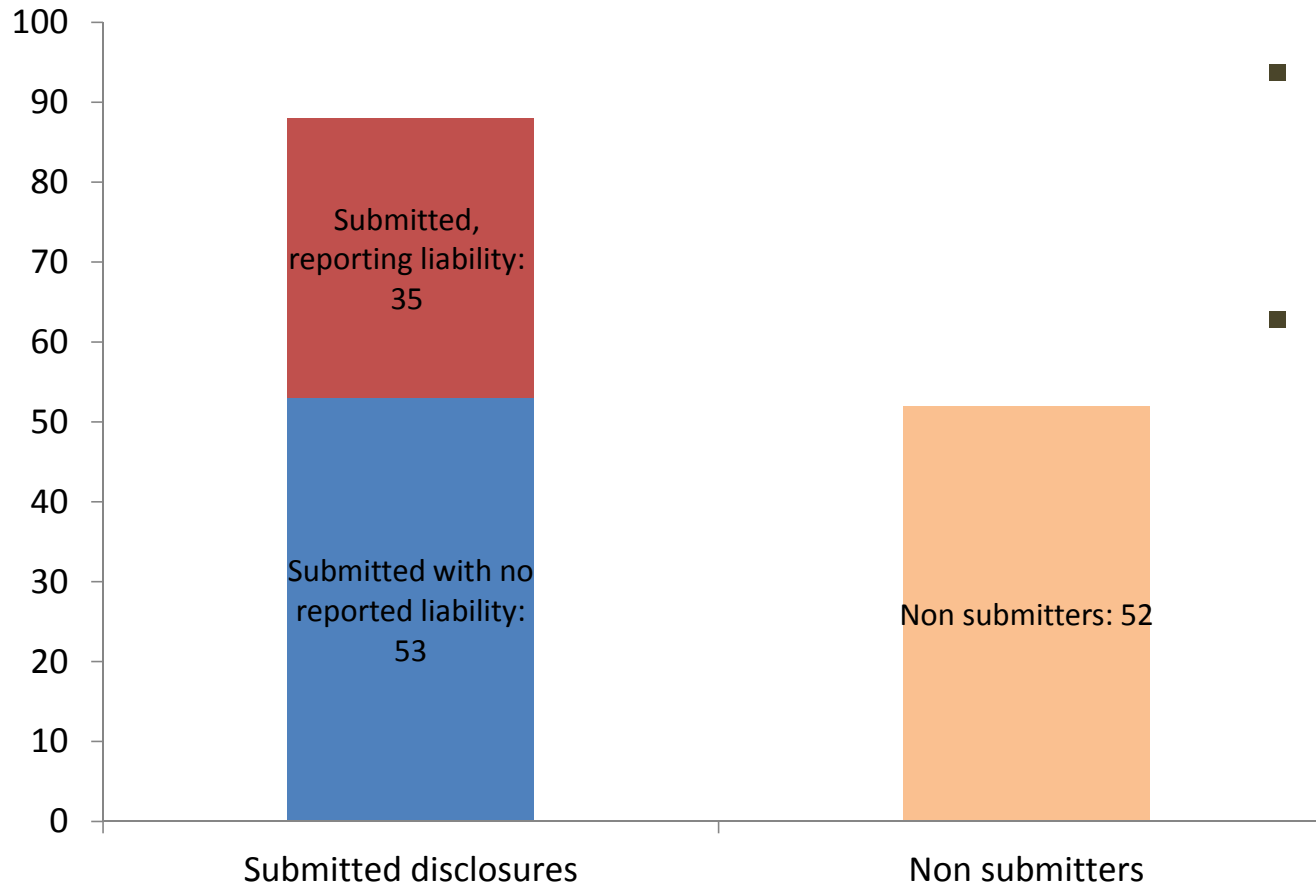
# Current activities and next steps

- Historic LUC analyses reviewed by independent expert
- Additional studies on:
  - Financial costs of compensation projects and implications of compensation
  - Best practice guidance for remediation approaches (riparian areas, etc)
  - Improving methodology for historic LUC analysis
  - Legality of compensation requirements
  - Vegetation coefficient studies for Latin America & Africa
  - Prioritization of compensation projects
- Data and studies from staged implementation period incorporated into revision of Remediation and Compensation Procedures (revision complete by *March 2015*)
- *April – May 2015*: Public consultation on revised draft
- *August 2015*: Finalized draft sent to BoG for approval



# Update on Disclosure results

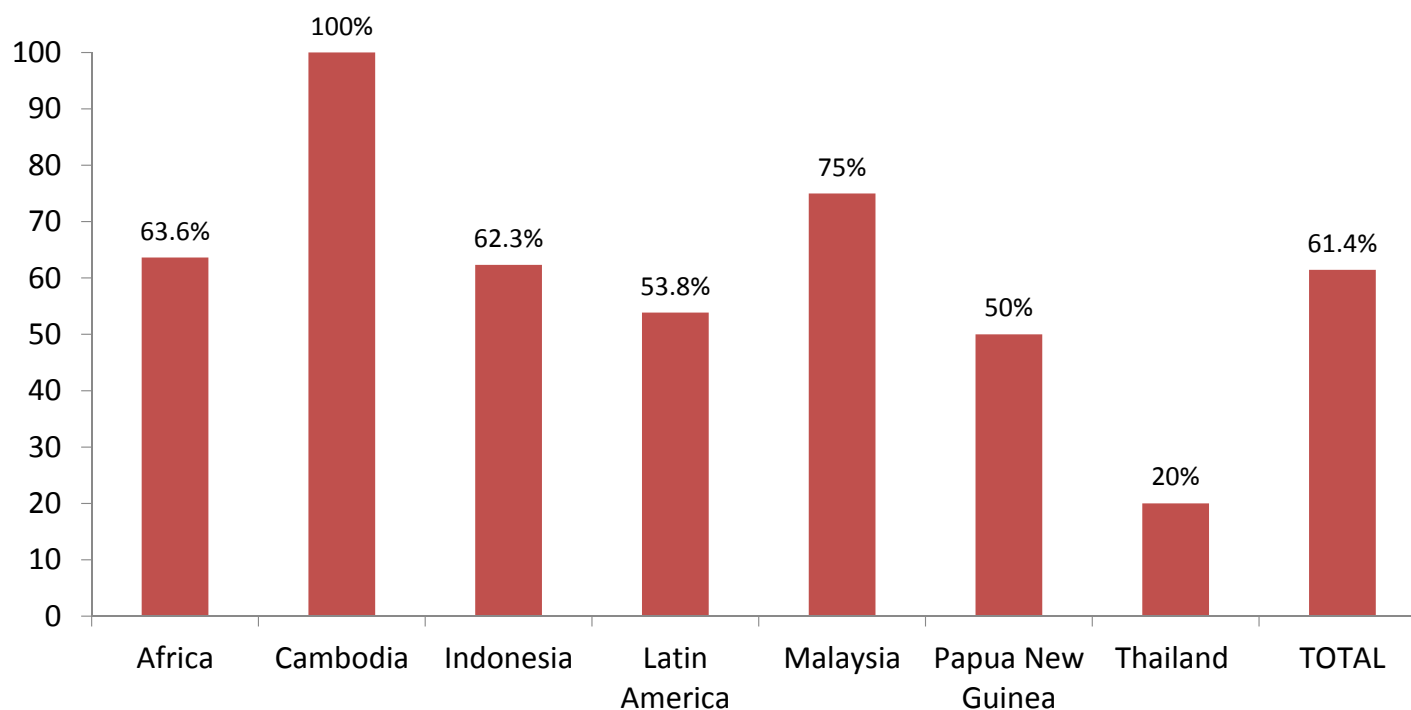
# of companies



- Total companies reporting non-compliant clearance: **35**
- Total hectares of non-compliant clearance (raw liability) reported: **283,741 ha**

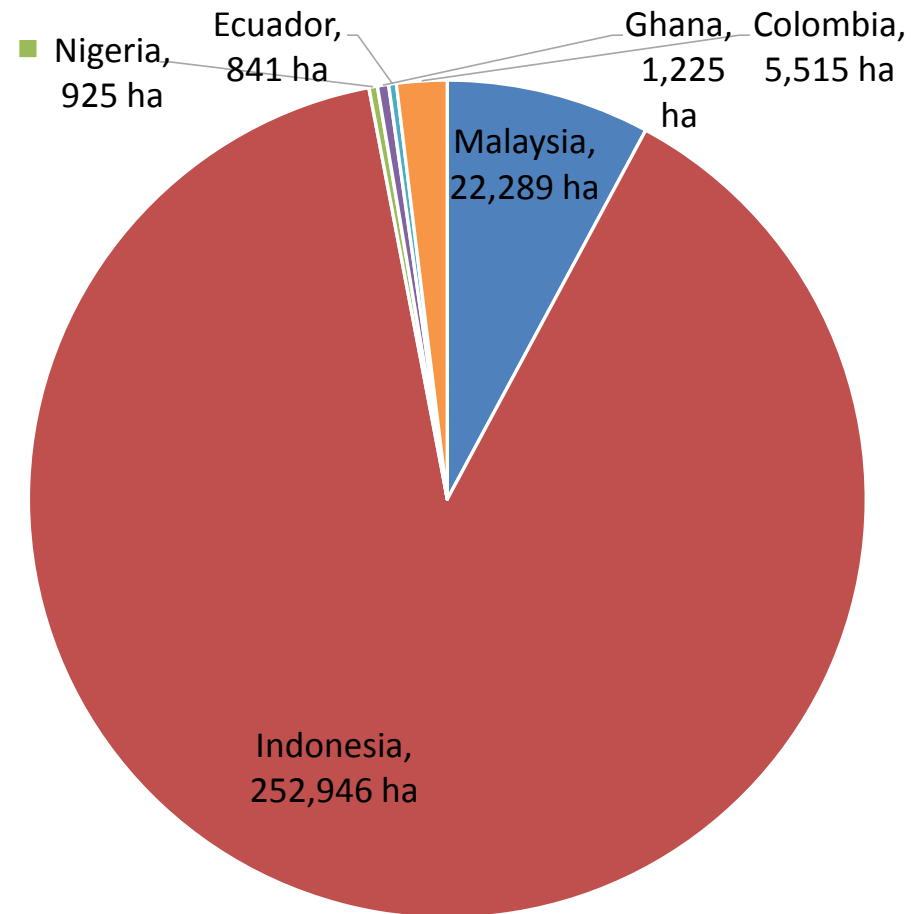
# Disclosure submissions by region

Percent of companies submitting disclosure templates, by region of operation



Region of Operation	Total Grower companies	Total Submission
Africa	11	7
Cambodia	1	1
Indonesia	69	43
Latin America	26	14
Malaysia	24	18
Papua New Guinea	4	2
Thailand	5	1
<b>TOTAL</b>	<b>140</b>	<b>86</b>

# Area of non-compliant clearance reported by country

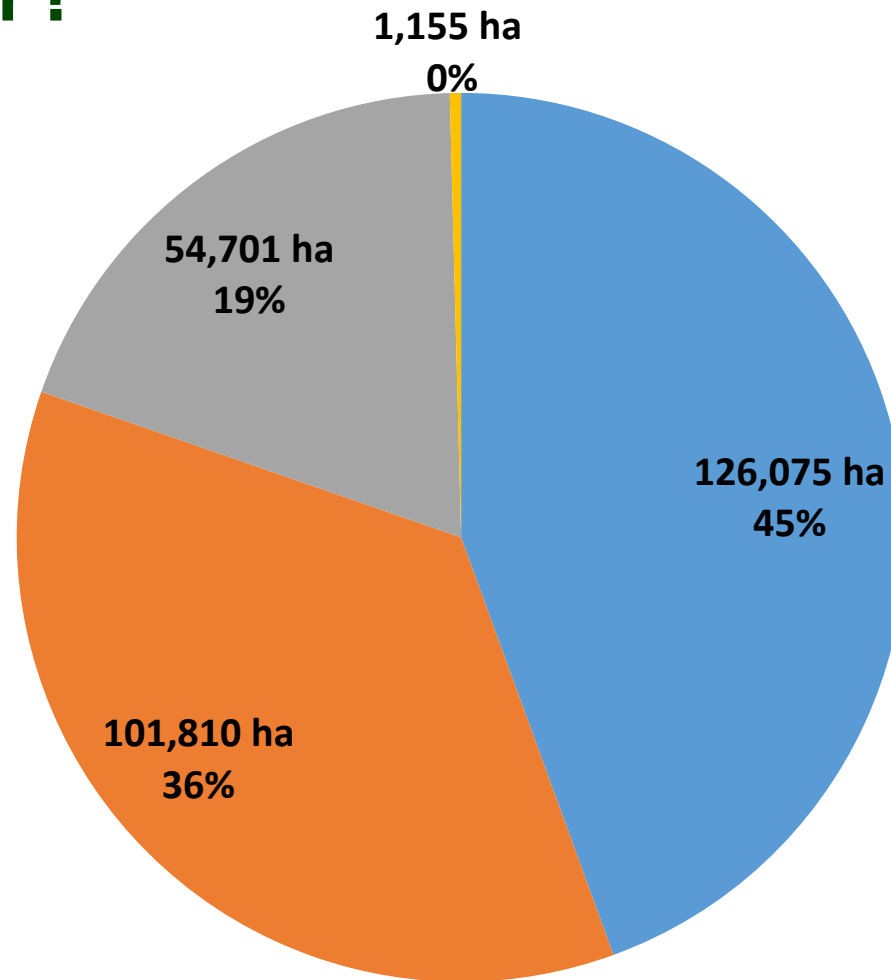


# Calculating conservation liability

- When did the clearing occur?
- What was the land cover in November 2005?
- Who controlled the area when the clearing occurred?
- Was the clearing commercial or non-commercial?

# When did the reported non-compliant clearance occur?

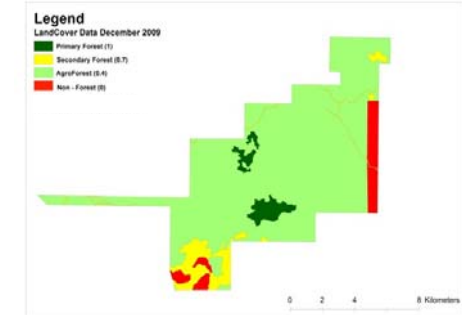
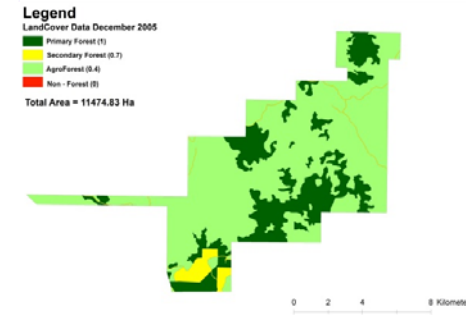
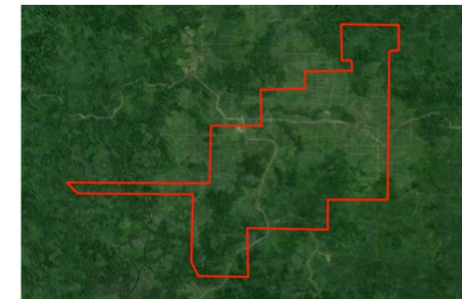
- Nov. 2005 – 30 Nov 2007
- 1 Dec. 2007 -31 Dec. 2009
- 1 Jan. 2010 - 9 May 2014
- After 9 May 2014



**Total: 283,741 ha**

# Historic LUC Analysis Submissions

- Companies reporting zero liability (No LUC analysis required): **53**
- Companies with reported liability (LUC analysis required): **35**
  - Submitted LUC: **19**
    - Complete: **7**
    - Incomplete: **12**
  - Not yet submitted LUC: **16**
- Companies non-compliant with disclosure requirement (LUC may or may not be required): **52**



# We need your participation

- Grower members, if you haven't done so already:
  - Submit disclosure templates (even if you don't have any non-compliant clearance)
  - Submit historic LUC analyses and supporting docs for areas with non-compliant clearance
- Provide input:
  - To refine methods for identifying and remediating and compensating for potential loss of social HCVs
  - Ideas and case studies for viable compensation projects
  - Feedback on draft procedures and guidance documents





**Thanks for your attention**

Anne Rosenbarger  
Email: [ARosenbarger@wri.org](mailto:ARosenbarger@wri.org)